

Call Toll-Free: 1-800 Van Mark Email: sales@van-mark.com

**Save Time! Save Money!**

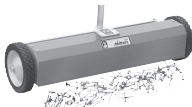



All 3000 Series Parts Numbers are Complete  
"Ready to Use" Assemblies.

Ref	Description		Model J8A STD XC8A XC P/N	Model J10A STD XC10A XC P/N	Model J12A STD XC12A XC P/N
1	Slide Bar & Wedge Assm	STD	3803	3804	3805
2	Slide Bar & Wedge Assm	XC	3810	3811	3812
3	L Bar w/SS Edge Strip	STD	3817	3818	3819
4	L Bar w/SS Edge Strip	XC	3824	3825	3826
5	Hinge, Front w/Black Vinyl Strip*		3831	3832	3833
6	Hinge, Fixed Rear*	STD	4581	4583	4585
7	Hinge, Fixed Rear*	XC	4582	4584	4586
8	Rail, Base Front	STD	4646	4647	4648
9	Rail, Base Front	XC	4653	4654	4655
10	Rail, Base Rear	STD	4660	4661	4662
11	Rail, Base Rear	XC	4667	4668	4669
12	Strip, Stainless Steel Edge**		4494	4495	4496

\*\*Can ship via UPS in 2 pcs.

Parts For All Models		
Ref	Part Name	P/N
13	Strip, Black Vinyl Wear (1 ea)	4482
14	Handle, Bending w/Brackets	3536
15	Brackets, Bending Handle (2 ea)	3579
16	Wedges & Wedge Block Assm	3843
17	Springs	3584
18	C Clamp Casting	3838
19-20	Lock Handle & Grip	3586
48	Lock Handle Bracket	3845
52	Lock Handle Clevis Assembly	3846
22	Handles, Carrying (2 ea)	3572

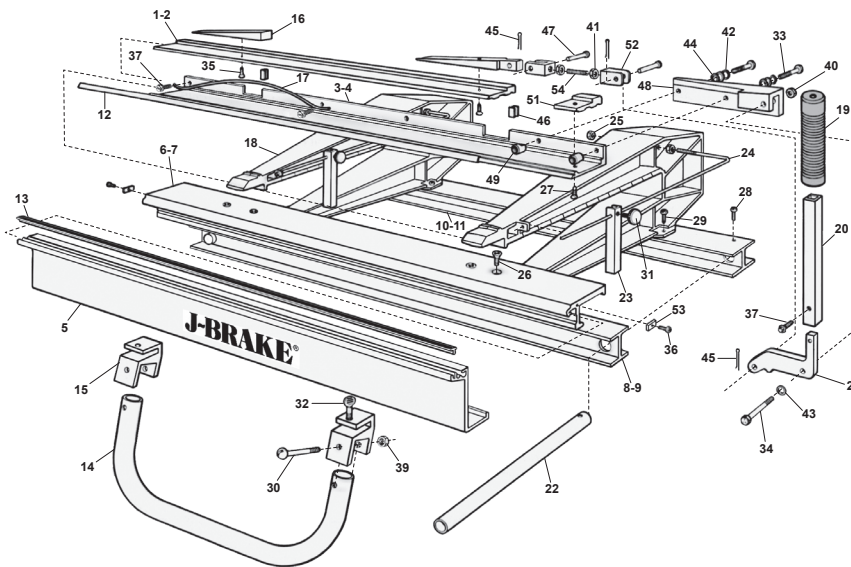
**Optional Accessories**

NailHawg™	Steel Folding Legs 3000	Wheel Kit 3004	UniStand™ USA1
			
Gets nails from job site (shown with partial handle)	Heavy-Duty steel legs (includes hardware)	Fits All Van Mark Brakes Attaches to one end of Brake Base Rails	Easily maneuvers Van Mark tools over terrains

Tune-Up Kits	
	STD Model P/N 3842 XC Model P/N 3848
Ref	Description
13	Strip, Black Vinyl Wear (1 ea)
16	Wedges & #1 Wedge Block Assm w/Screws
17	Springs, Round x 10 1/4" (4 ea)
19-20	Locking Handle & Black Grip
52	Locking Handle Clevis Assembly w/Pivot Pins
	Screw & Fastener Package, Misc.

**Important Notice!** Parts are also available for J-Brakes built prior to 1979 whose model numbers do not contain the letter A.

\*OEM Part no longer available. Call for options.



**VAN MARK PRODUCTS CORPORATION**

24145 Industrial Park Drive, Farmington Hills, MI 48335-2864 Michigan 1-248-478-1200  
**Call Free 1-800-VAN-MARK (1-800-826-6275) Fax Free! 1-888-VAN-MARK (1-888-826-6275)**  
 Web Site: www.van-mark.com E-mail: sales@van-mark.com

**J-Brake™**

Orders must include model and serial no. in order to guarantee correct parts are shipped.